

2022 CANADIAN
LAND TRUST
SUMMIT

SOMMET NATIONAL
DES ORGANISMES DE
CONSERVATION 2022

October 24 to 26 | Ottawa | 24 au 26 octobre

Thanks to our sponsors!

This project was undertaken with the financial support of:
Ce projet a été réalisé avec l'appui financier de :



Environment and
Climate Change Canada

Environnement et
Changement climatique Canada





INDIGENOUS LAND TRUSTS

Ian Attridge

National Land Trust Summit

October 2022

Algonquin Unceded Territory

Indigenous Land Trusts

- Indigenous-led
- Lift up Indigenous practices, culture, governance, rights
- Organization of people
- Community purposes (conservation, cultural, access, etc.)
- Hold and care for lands



Land transfer,
SISCENEM Island

Why ILTs?

- Ongoing responsibilities for lands and waters
- Land Back
 - “Indigenous lands” are 0.7% of Canada’s land area
 - 0.05% Canadian philanthropy goes to Indigenous causes
 - willing donors, LTs, growing interest in “reconciliation”
- Self-governance
- Cultural practices
- Decolonize “conservation”



Reserve Lands, Private PAs in southern Canada

Private PAs:

780,232 ha

Indigenous Lands:

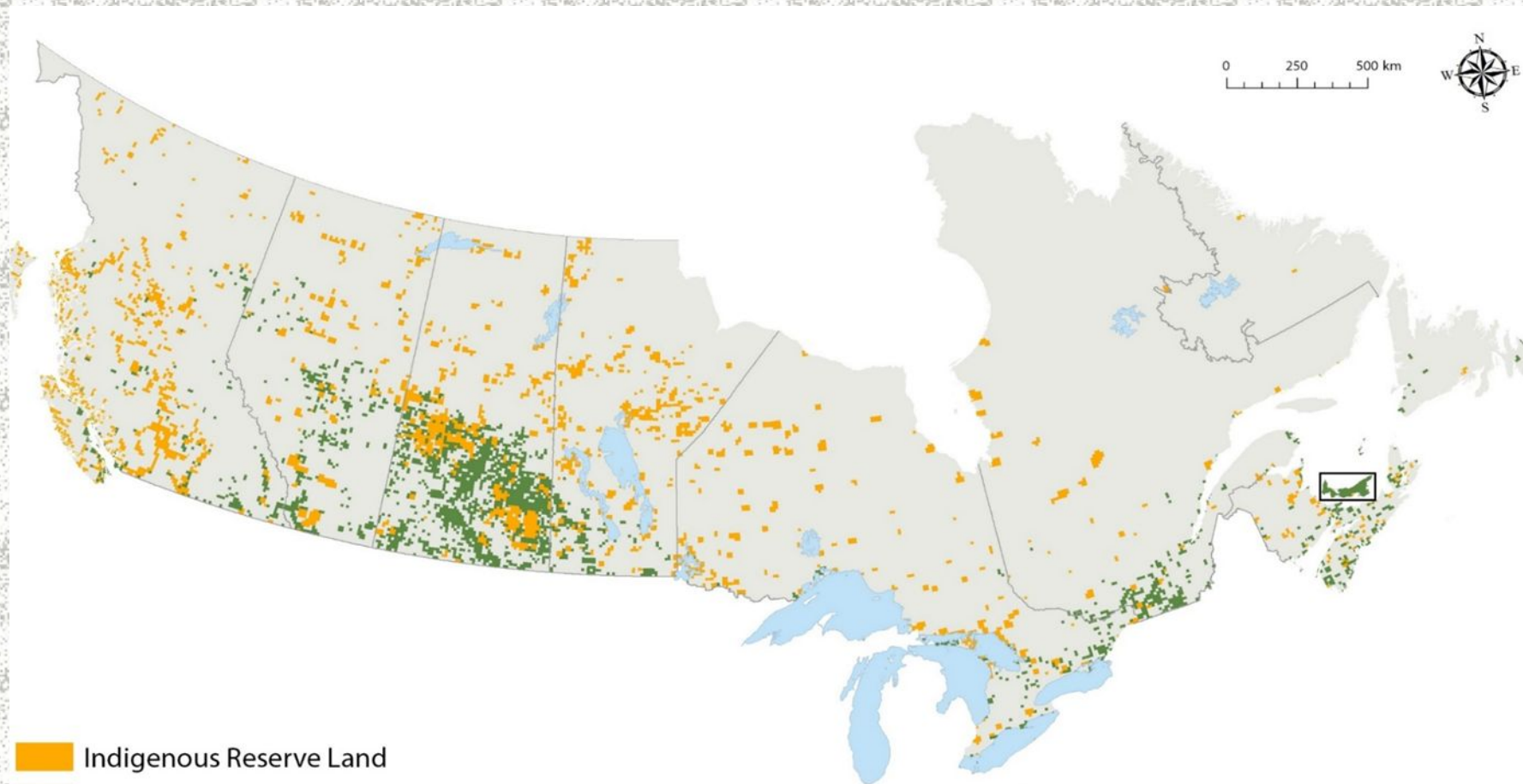
3,996,001 ha

Reserves:

3,649,879 ha

*Respect and
Responsibility,
2021*

[Canada, NCC
data, maps]



Indigenous Reserve Land
Private Protected Area

SOURCES

Natural Resources Canada. 2021. *Aboriginal Lands of Canada Legislative Boundaries*. Version 13.6. Available at <https://open.canada.ca/data/en/dataset/522b07b9-78e2-4819-b736-ad9208eb1067>. Downloaded 2021-10-18.

Nature Conservancy of Canada. 2021. *Fee Simple and Conservation Agreements*.

Environment and Climate Change Canada. 2020. *Canadian Protected and Conserved Areas Database (CPCAD)*. Version 2020. Available at <https://www.canada.ca/en/environment-climate-change/services/national-wildlife-areas/protected-conserved-areas-database.html>. Downloaded 2021-04-09.

Environment and Climate Change Canada. 2016. *Private Conservation Lands 10 km Square Grid*.





ILTs and Conservation LTs

Similarities:

- hold and care for lands
- organizations of people

Differences:

- worldviews
- governance
- relationships
- practices



CRP and ILTC



conservation
through
reconciliation
partnership

- Conservation through Reconciliation Partnership
 - network advancing Indigenous-led conservation and IPCAs
 - Indigenous leadership, rights, responsibilities, knowledges
 - transforms conservation strategy, practice; ICE WRT report
- Indigenous Land Trust Circle
 - Mix of Indigenous and non-Indigenous members
 - Share experiences, questions, learnings
 - Research
 - Workshops

ILTs in action

- Donors interested:
 - Janice Keil/Alderville – “Unreserved” 2017
 - GTA homeowners
 - OLTA referrals
- Indigenous Land Stewardship Circle and High Park, ON
- Crown government returns: ON, PQ, MB
- “Métis in Space” GFM buys 65 ac, AB



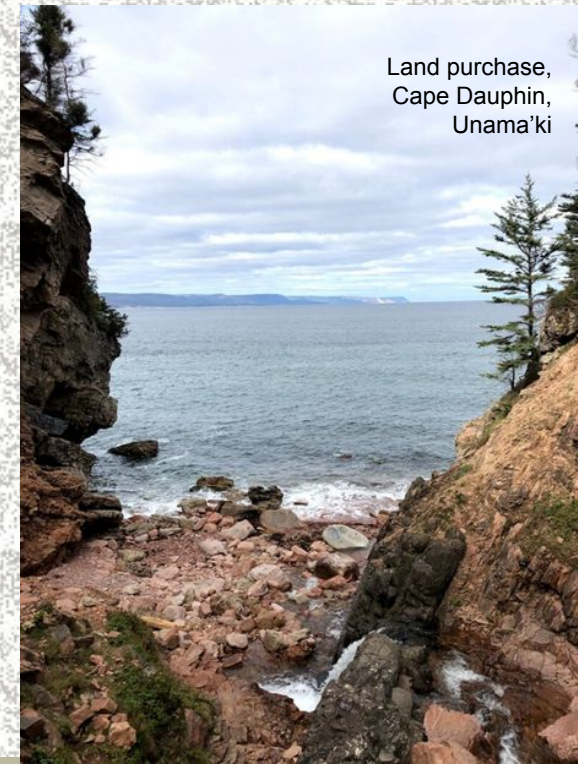
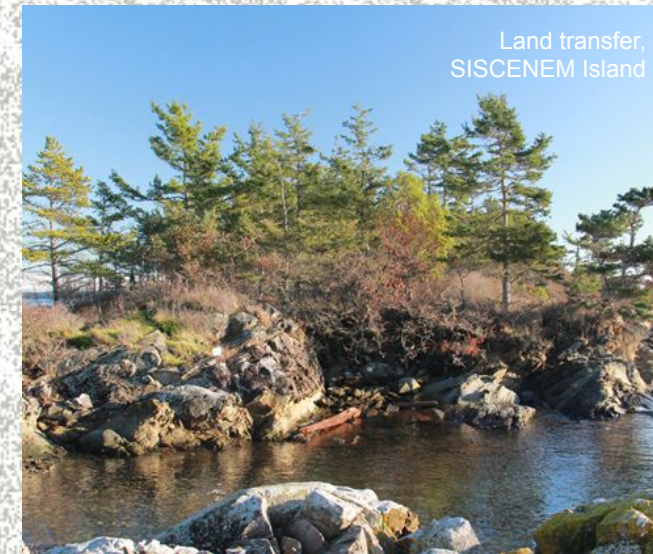
Stewardship,
High Park, TO



Molly Swain and
Chelsea Vowel,
“Métis in Space”

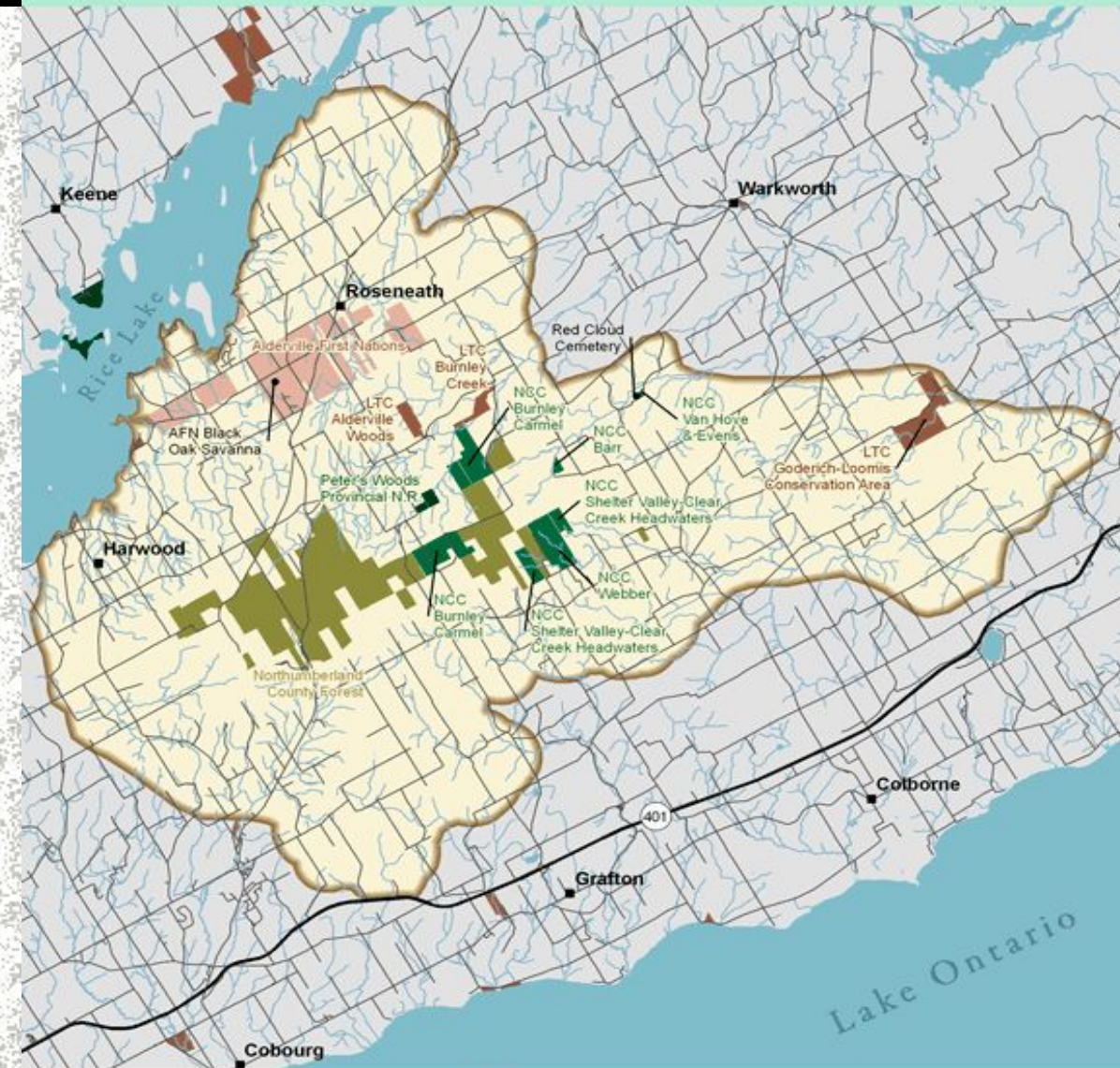
ILTs in action

- Land purchase of Kluskap Cave, NS, Unama'ki
- LT transfer to W̱SÁNEĆ Leadership Council, BC
- First Light Learning Journey: 25 ally groups working with Wabanaki on over 2M acres, ME
- Land tax, lands to Sogorea Te' LT, CA



Cumulative effects of Indigenous and land trusts' partnerships:

understanding, relationships, collaboration, restoration, resources, land extent, connectivity, practices



Land Ownership

- Lower Trent C.A.
- Provincial Park
- NCC Project Property
- Alderville First Nations
- Northumberland County Forest

Rice Lake Plains Study Area



Disclaimer:
This map is illustrative only. Do not rely on it as being a precise
indicator of privately-owned land, routes, locations of features,
nor as a guide to navigation.

This map may contain inaccuracies or errors.

Data Sources:
Nature Conservancy of Canada - Ontario Region, 2007
Ontario Ministry of Natural Resources, 2006

©The Nature Conservancy of Canada - Ontario Region
5-Oct-09



Discussion

What interests you about ILTs?

What information or assistance would be useful to you?

How might an ILT help your community?

How might conservation LTs work with your community?

What is your experience with LTs?

What opportunities or challenges do you see with ILTs?